

HPCI supercomputers are Open to the world!

We are looking forward to your innovative proposals!

★ Small-Scale and Trial Project Calls Open Throughout the Year!

★ Regular Call Opens Twice a Year!

September : Period A
(Fugaku and other HPCI)

March : Period B
(Fugaku only)

The World's
Fastest Class
Supercomputer
Fugaku

Who can apply*?

In principle, researchers in academia or industry, including from outside Japan, are eligible for application.

Criteria*

General Access

- Scientifically excellent / socially valuable research
- Breakthroughs / pioneering achievements are expected

Junior Researchers

- Age limit: 39 years old
- Excellent ideas for which future development are expected

Industrial Access

- Solving important issues in science or socioeconomics
- Research impossible to carry out in-house

* Note that there are some exceptions to the eligibility and criteria described above. For more details, see the proposal preparation instructions for each project category.



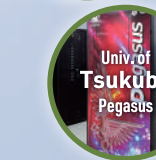
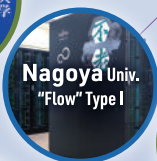
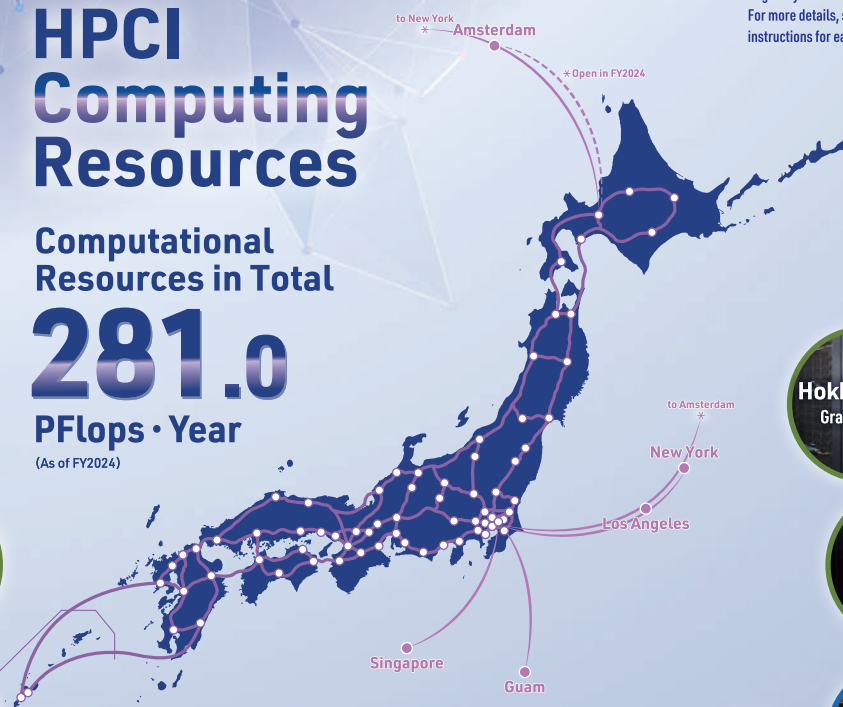
HPCI Computing Resources

Computational Resources in Total

281.0

PFlops · Year

(As of FY2024)



Shared Storage Capacity in Total **45.0 PB**

